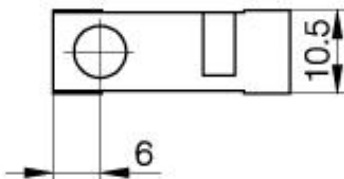
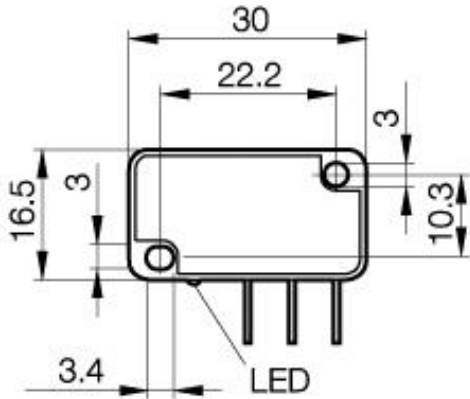


Inductive Sensors
BES 517-399-N1-C
10.5 x 30 x 16.5
normally-open
Sn=2mm
shielded



PX0649

Common Data

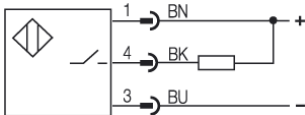
| | |
|--------------------------------|---------------------|
| Product name | Minisensor shielded |
| Mounting in steel | 2mm |
| Rated operating distance Sn | 0...1.6mm |
| Assured operating distance Sa | ≤ 5% |
| Repeatability R | ≤ 15% |
| Hysteresis | yes |
| Function indication | -25...+70°C |
| Ambient temperature range | 3 |
| Polution Degree | ≤ 50ms |
| Time delay before availability | |

Mechanical Data

| | |
|---|--------------------|
| Measurements BxHxT or DxT | 10.5 x 30 x 16.5mm |
| Housing material | PBTP 20%GV |
| Material of sensing face | PBTP 20%GV |
| Degree of protection | IP65IP |
| Connection | Connector |
| Schock: Halfsinus, 30 gn, 11ms | |
| Vibration: 55 Hz, 1mm Amplitude, 3 x 30 Minutes | |

Electrical Data

| | |
|-------------------------------------|---------------|
| Current type | DC |
| Wiring | 3-Wire |
| switching function | normally-open |
| Output signal | NPN |
| Rated operational voltage | 24 DCV |
| Rated operational current | 200mA |
| Supply voltage | 10...30 DCV |
| Ripple | ≤ 15% |
| max. switching frequency | 2500Hz |
| No-load supply current | ≤ 10/≤ 3mA |
| Off-state current | ≤ 80μA |
| Voltage drop | ≤ 2/-V |
| Short circuit protection | yes |
| Protected against polarity reversal | yes |



Utilization categories
 Insulation class

DC 13

Datasheet number:

Definitions see general catalog.
 If not otherwise noted, ratings according to
 IEC 60947-5-2 (DIN EN60947-5-2)

Balluff GmbH
 Schurwaldstrasse 9
 73765 Neuhausen a.d.F.
 Phone (07158) 173-0 Fax (07158) 5010

Datenblatt by CD-ROM - 04/2007

